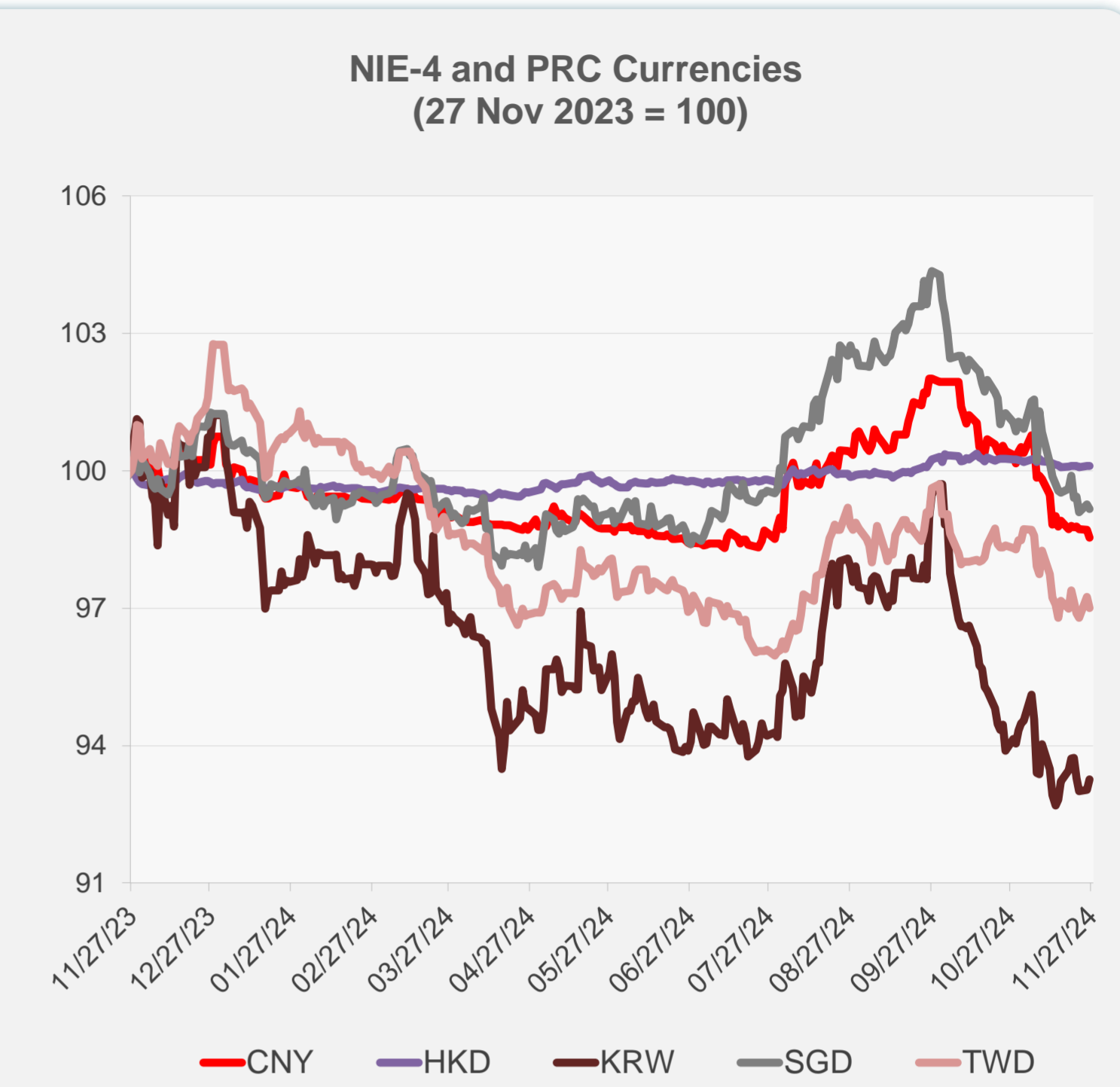
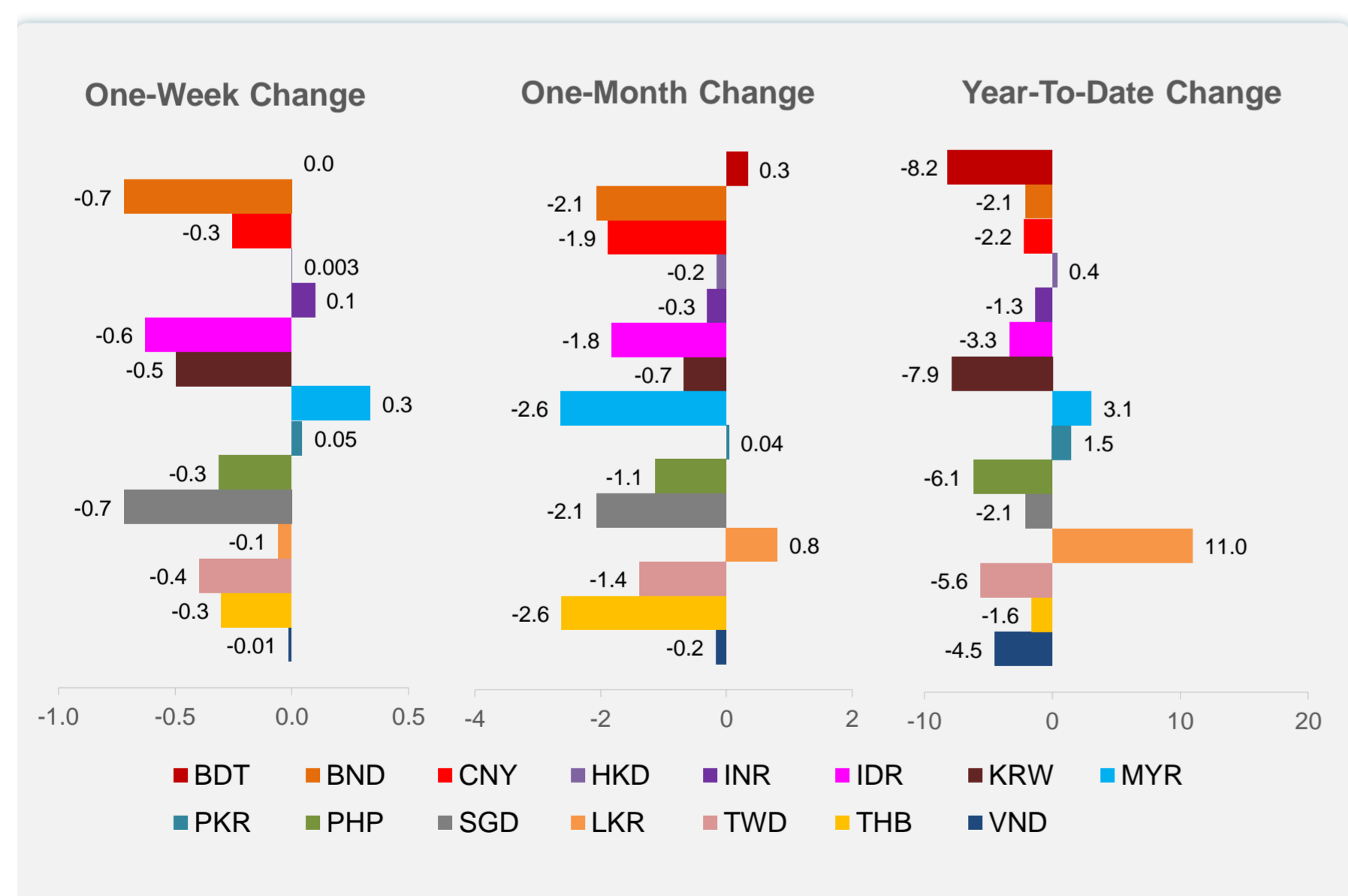
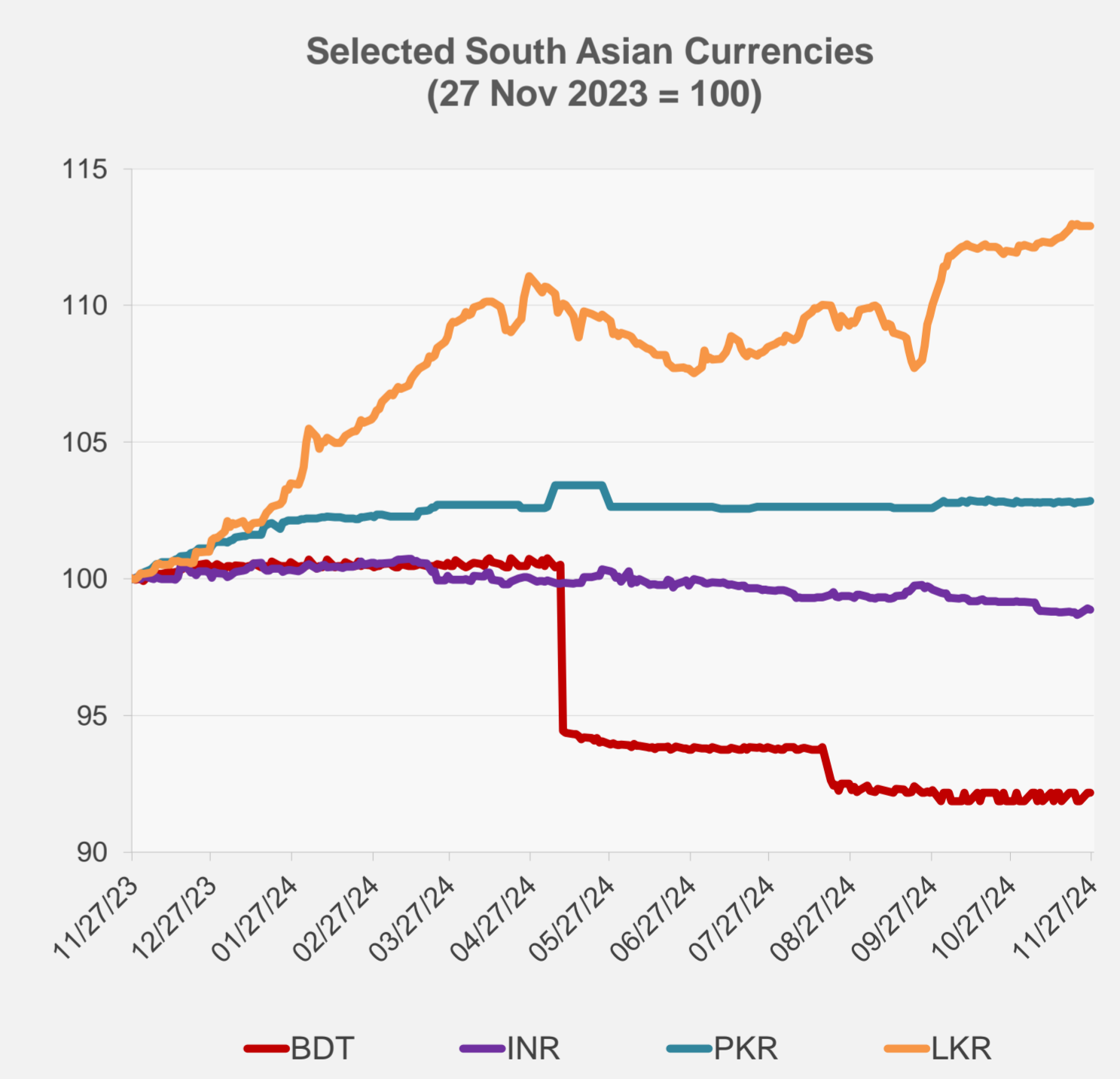
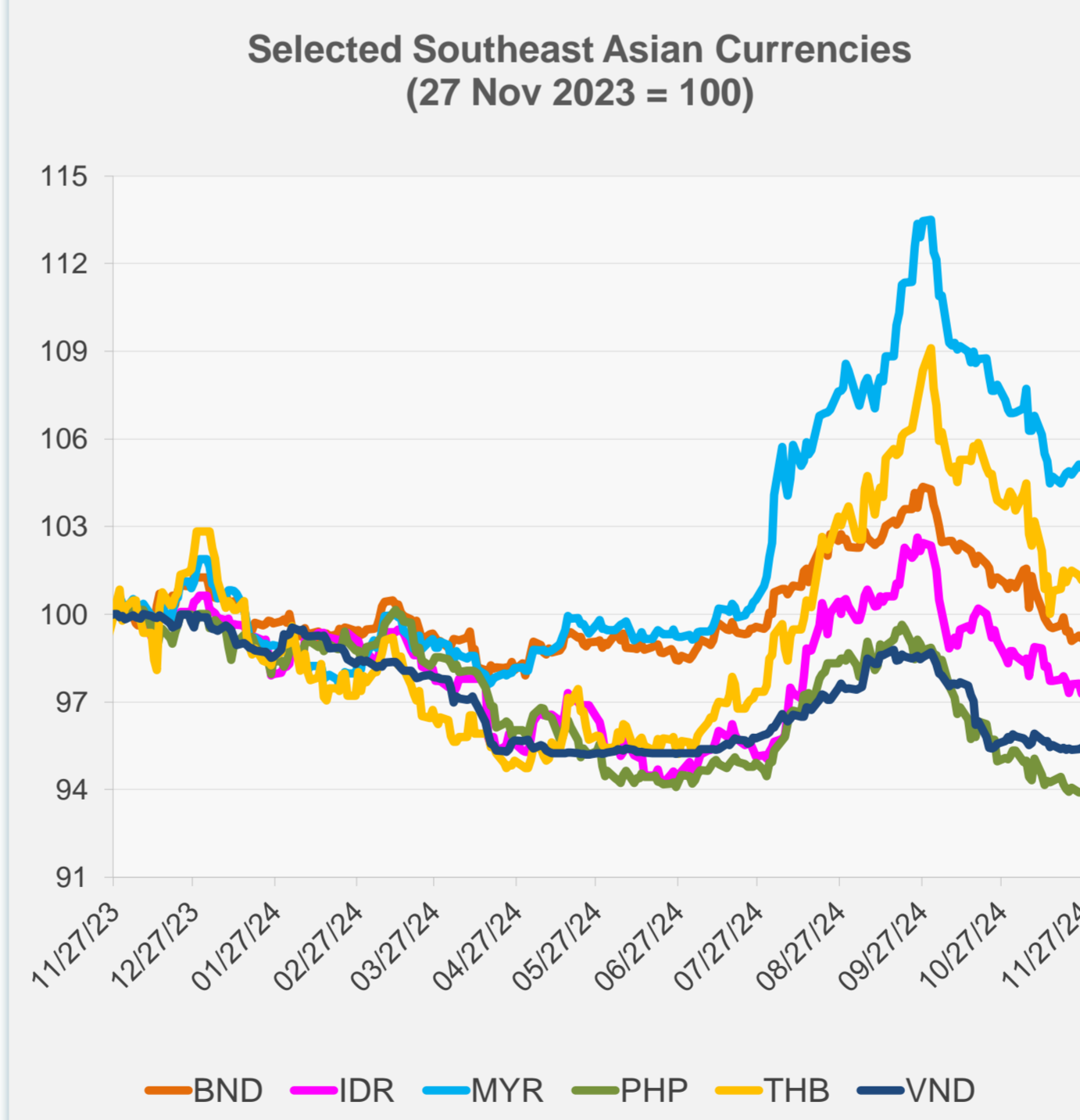


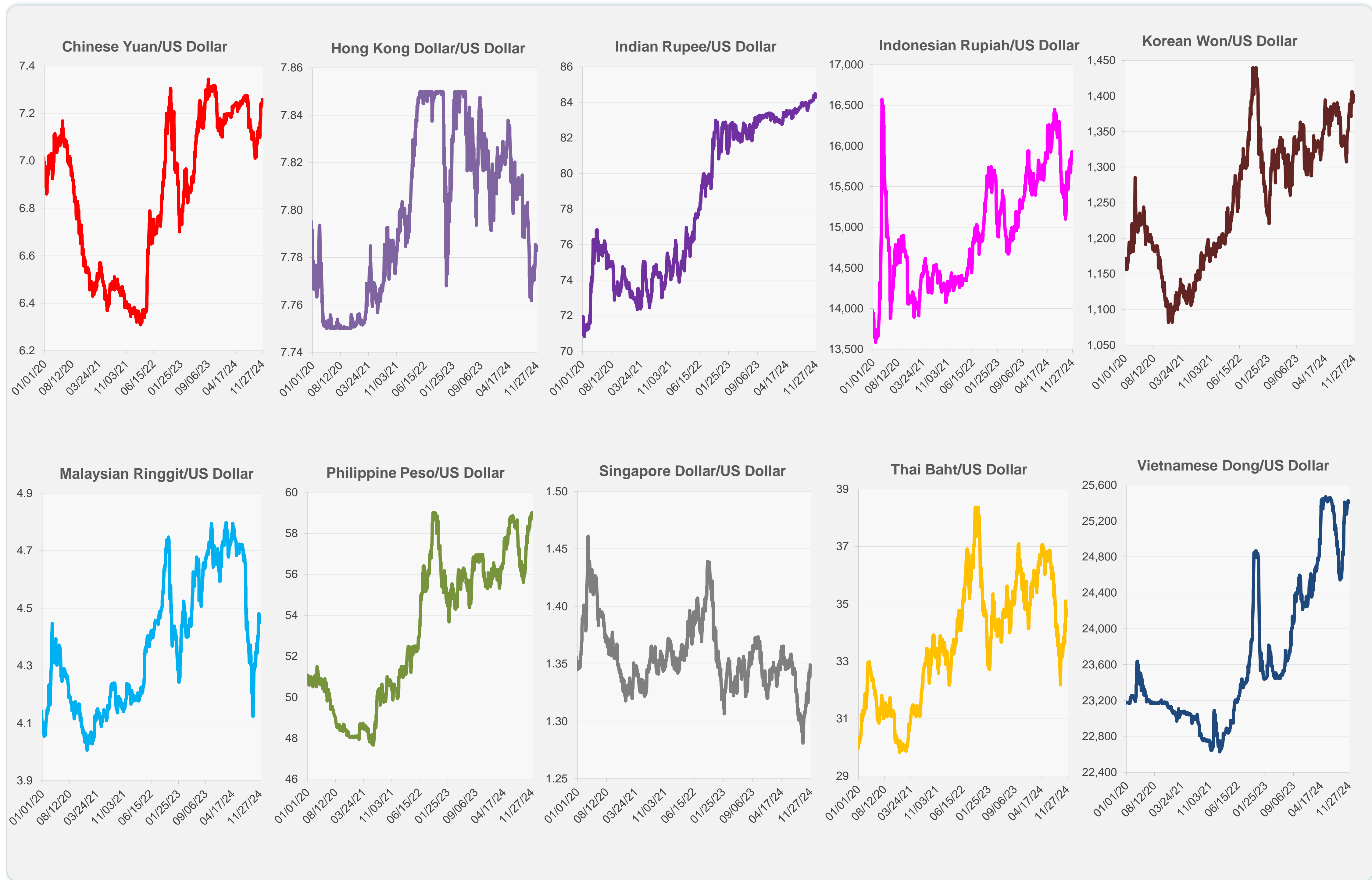
	Latest Closing	% change from Previous Day	% change from 01-Jan-24
Euro	0.95	-0.06	-5.10
Japanese yen (JPY)	153.46	0.60	-8.19
Bangladeshi taka (BDT)	119.50	0.00	-8.16
Brunei dollar (BND)	1.35	-0.10	-2.05
Chinese yuan (CNY)	7.26	-0.16	-2.18
Hong Kong dollar (HKD)	7.78	0.00	0.36
Indian rupee (INR)	84.33	-0.05	-1.30
Indonesian rupiah (IDR)	15,930.00	-0.38	-3.35
Korean won (KRW)	1,398.15	0.24	-7.87
Malaysian ringgit (MYR)	4.46	-0.12	3.06
Pakistan rupee (PKR)	277.73	0.02	1.48
Philippine peso (PHP)	59.00	-0.01	-6.12
Singapore dollar (SGD)	1.35	-0.10	-2.05
Sri Lanka rupee (LKR)	291.02	-0.01	10.98
Taipei,China NT dollar (TWD)	32.53	-0.25	-5.59
Thai baht (THB)	34.70	-0.16	-1.61
Vietnamese dong (VND)	25,408.00	0.05	-4.49



NIE = Newly Industrialized Economies



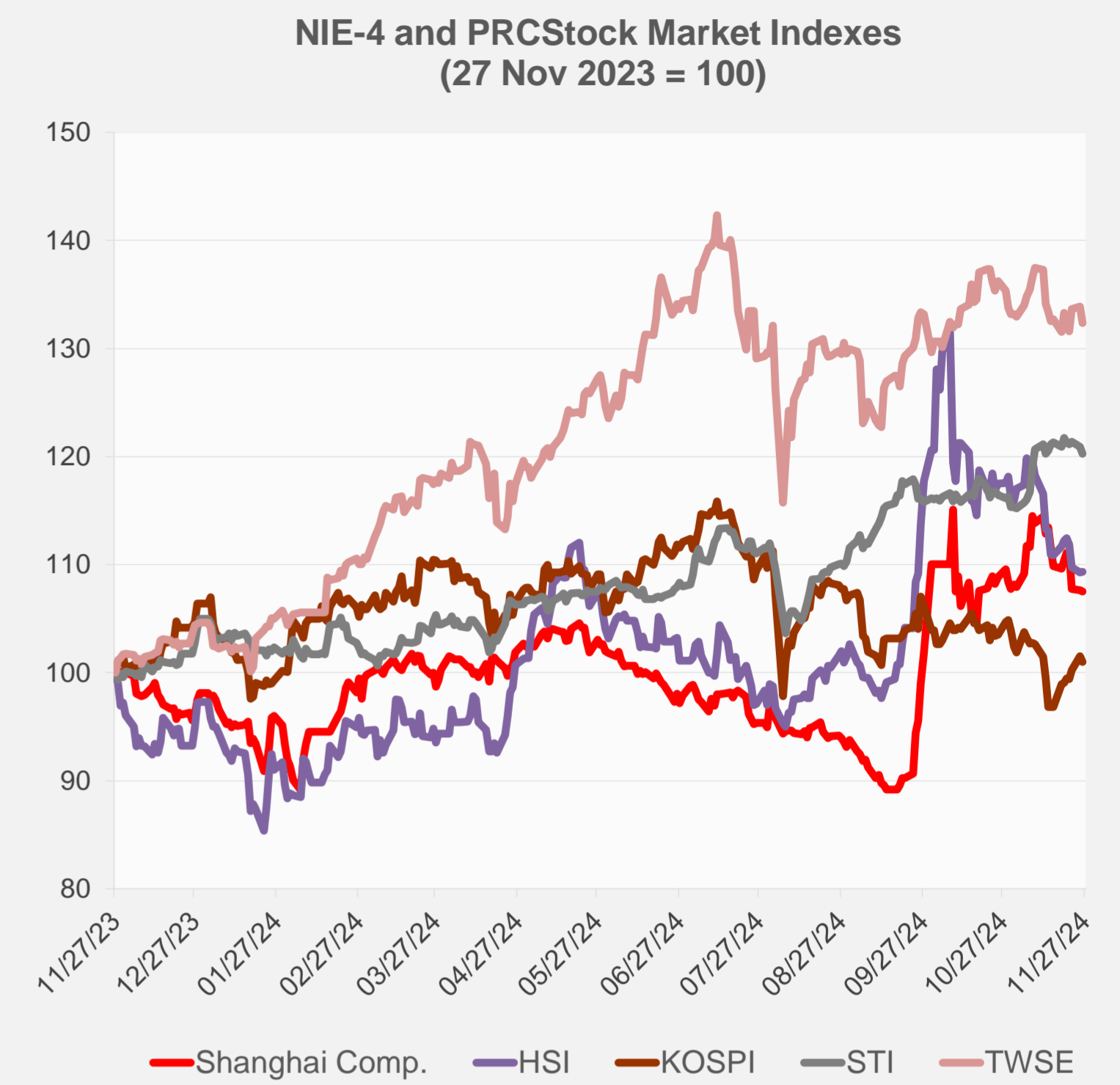
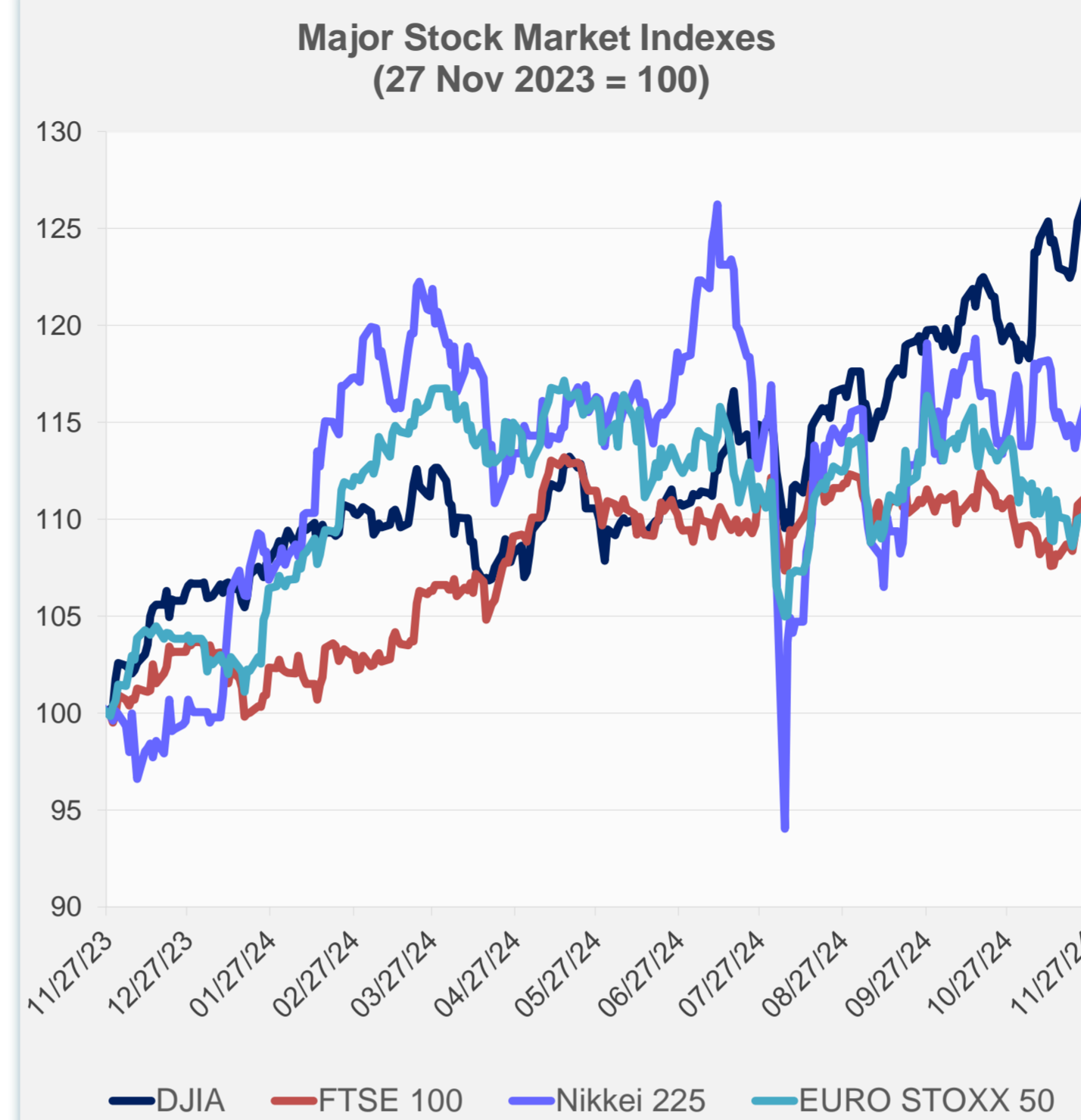
Note: Negative/Decreasing values indicate depreciation of local currency, and positive/increasing values indicate appreciation.
Source: ADB calculations using data from Haver Analytics.



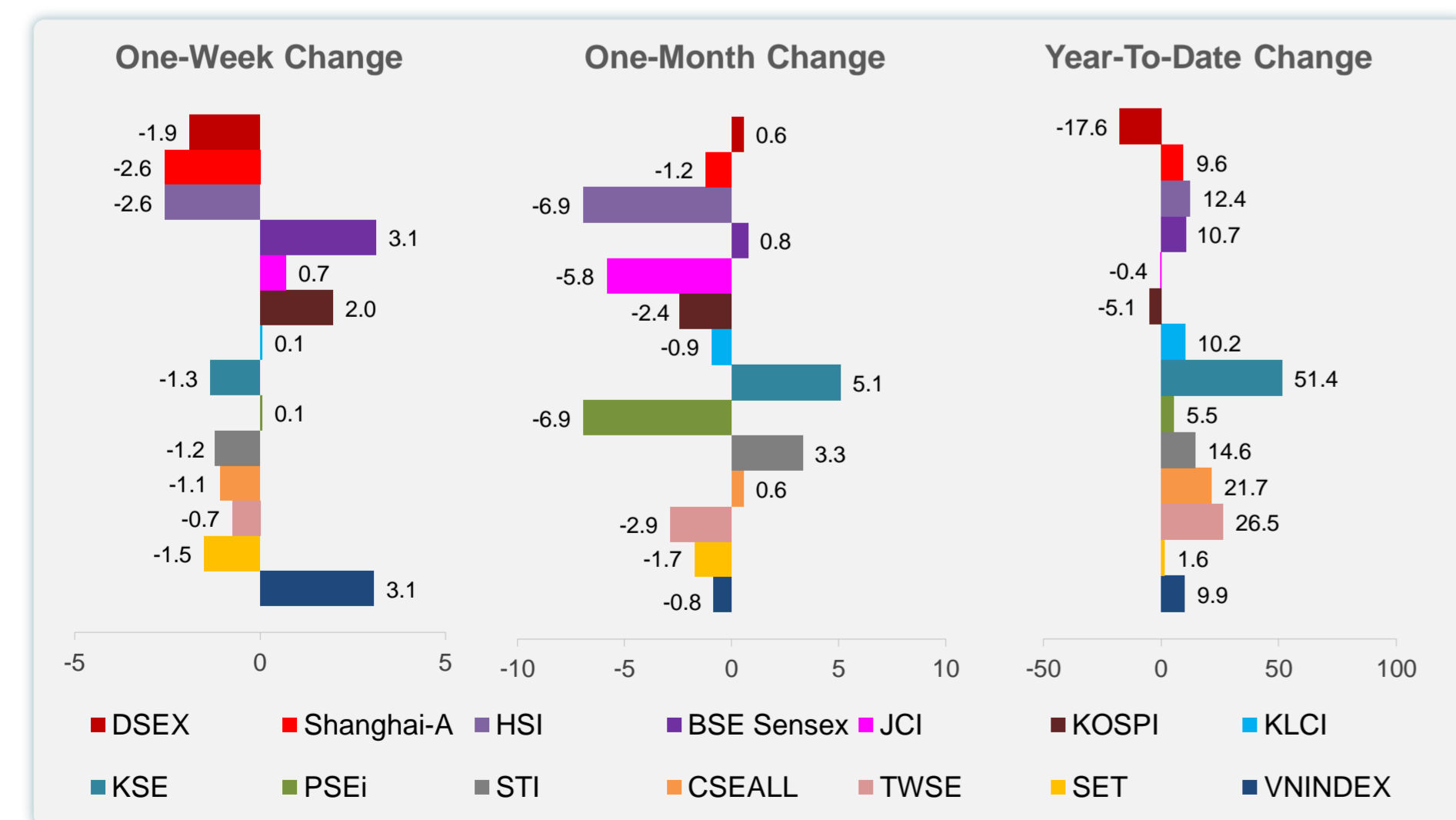
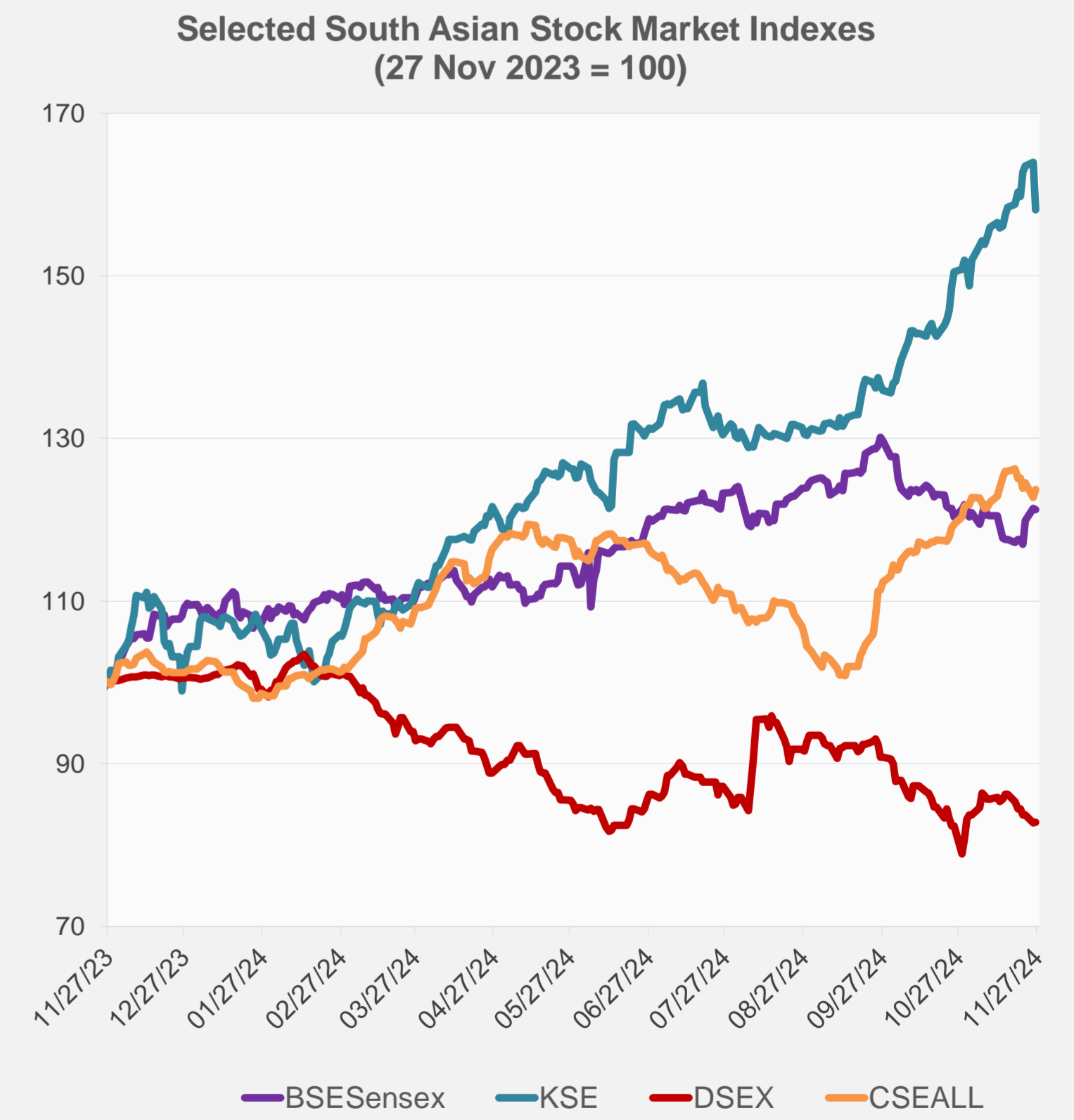
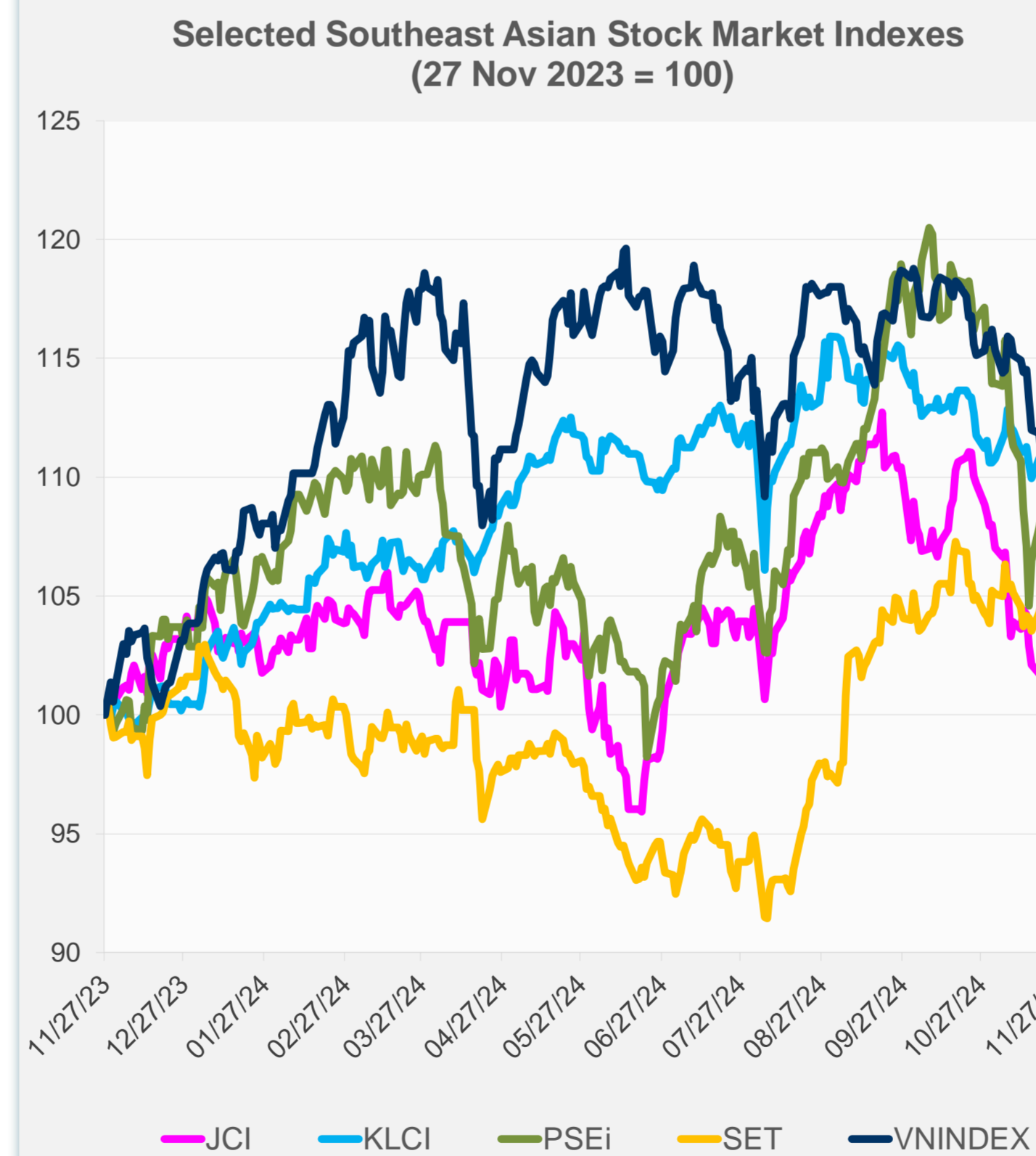
Source: Haver Analytics.

Daily Market Watch
STOCK INDEXES

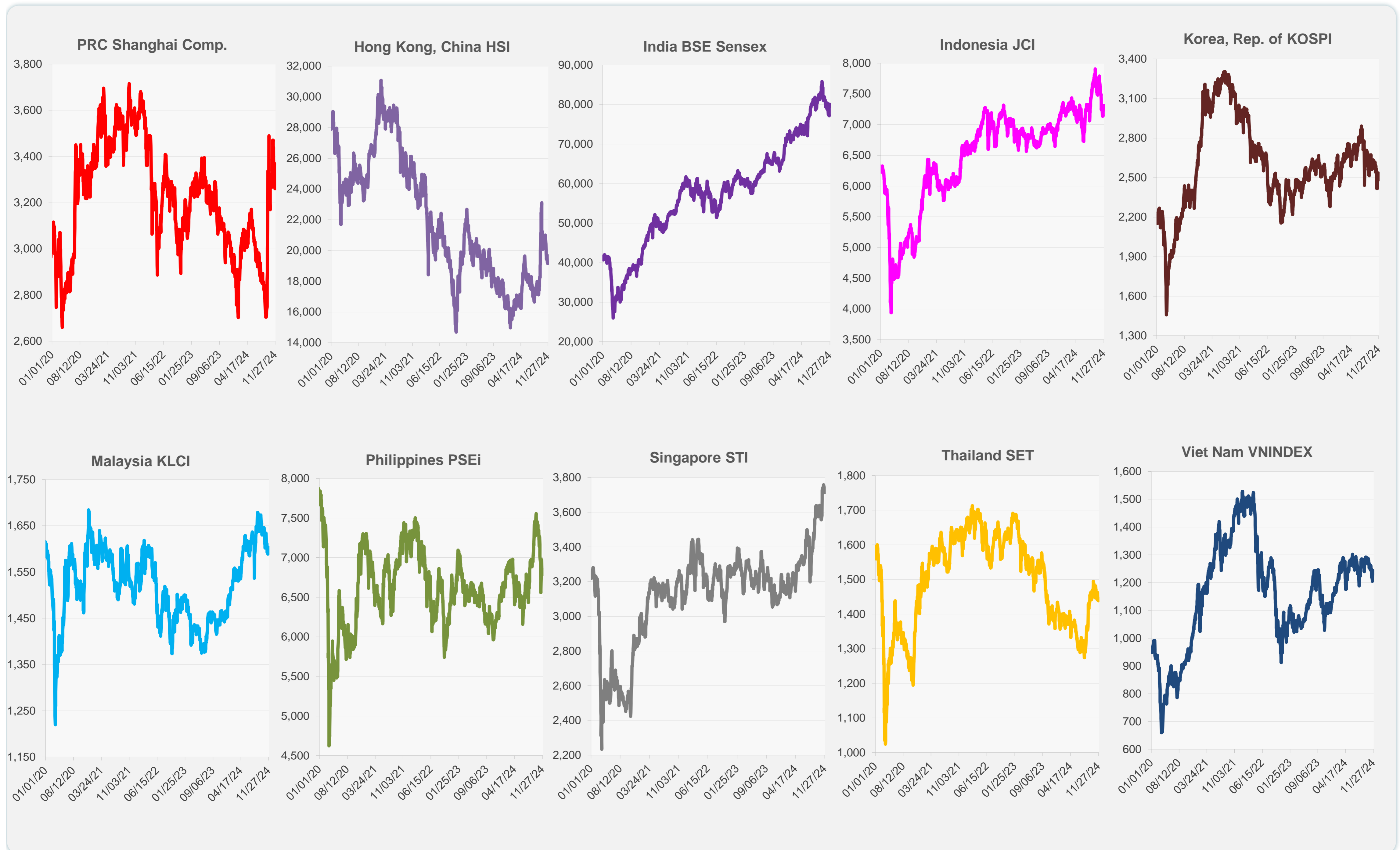
	Latest Closing	% change from Previous Day	% change from 01-Jan-24
US Dow Jones Ind Avg	44,860.31	0.28	19.03
US NASDAQ	19,174.30	0.63	27.73
US S&P 500	6,021.63	0.57	26.24
UK FTSE 100	8,258.61	-0.40	6.79
EURO STOXX 50	4,761.99	-0.79	5.32
Japan NIKKEI 225	38,442.00	-0.87	14.88
Bangladesh DSEX	5,143.13	0.14	-17.62
PRC Shanghai Comp.	3,259.76	-0.12	9.57
Hong Kong, China HSI	19,159.20	0.04	12.39
India BSE Sensex	80,004.06	-0.13	10.70
Indonesia JCI	7,245.89	-0.93	-0.37
Korea, Rep. of KOSPI	2,520.36	-0.55	-5.08
Malaysia KLCI	1,603.15	0.36	10.21
Pakistan KSE 100	94,574.16	-3.57	51.44
Philippines PSEi	6,806.86	-0.63	5.53
Singapore STI	3,712.39	-0.51	14.57
Sri Lanka CSEALL	12,964.03	0.76	21.68
Taipei, China TWSE	22,678.76	-1.17	26.48
Thailand SET	1,438.25	-0.35	1.58
Viet Nam VNINDEX	1,242.13	0.60	9.93



NIE = Newly Industrialized Economies



Sources: ADB calculations using data from CEIC Data Company and Haver Analytics.



Sources: CEIC Data Company and Haver Analytics.

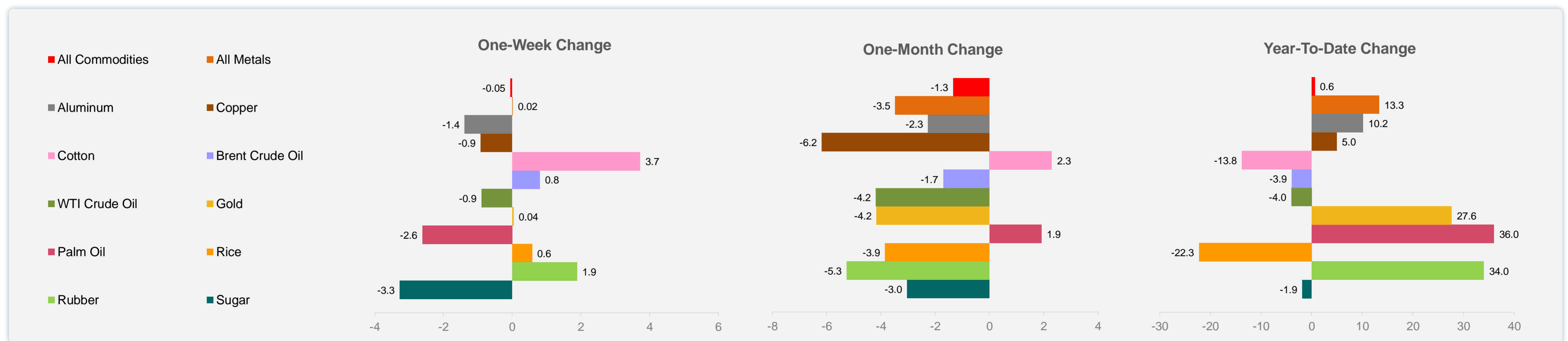
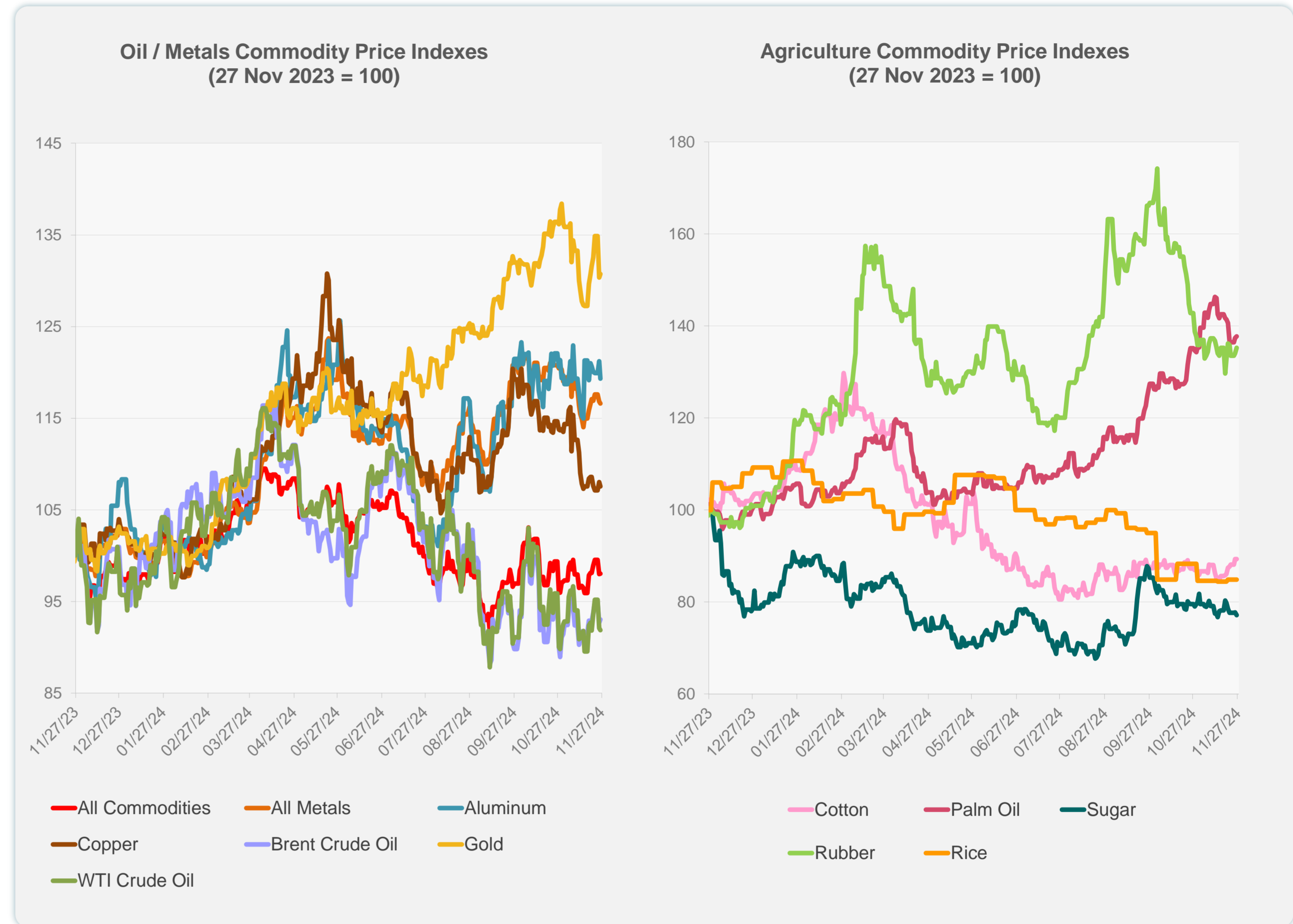
Daily Market Watch
COMMODITY PRICES

27 November 2024, 9:00 AM Manila

	Unit	Latest Closing	% change from Previous Day	% change from 01-Jan-24
S&P All Commodities	US\$	538.99	0.07	0.62
S&P All Metals	US\$	314.36	-0.19	13.32
Aluminum	US\$/metric ton	2,583.63	-1.57	10.15
Copper	US\$/metric ton	8,884.13	-0.44	4.96
Cotton	US cents/lb	67.68	-0.06	-13.78
Brent Crude Oil	US\$/barrel	74.57	0.38	-3.91
WTI Crude Oil	US\$/barrel	68.77	-0.25	-4.02
Gold	US\$/troy oz	2,633.15	0.31	27.64
Palm Oil	US\$/metric tonne	1,100.32	0.25	36.01
Rice ¹	US\$/metric ton	524.00	0.00	-22.26
Rubber ²	US\$/kg	232.00	0.87	34.03
Sugar	US cents/lb	20.09	-0.79	-1.86

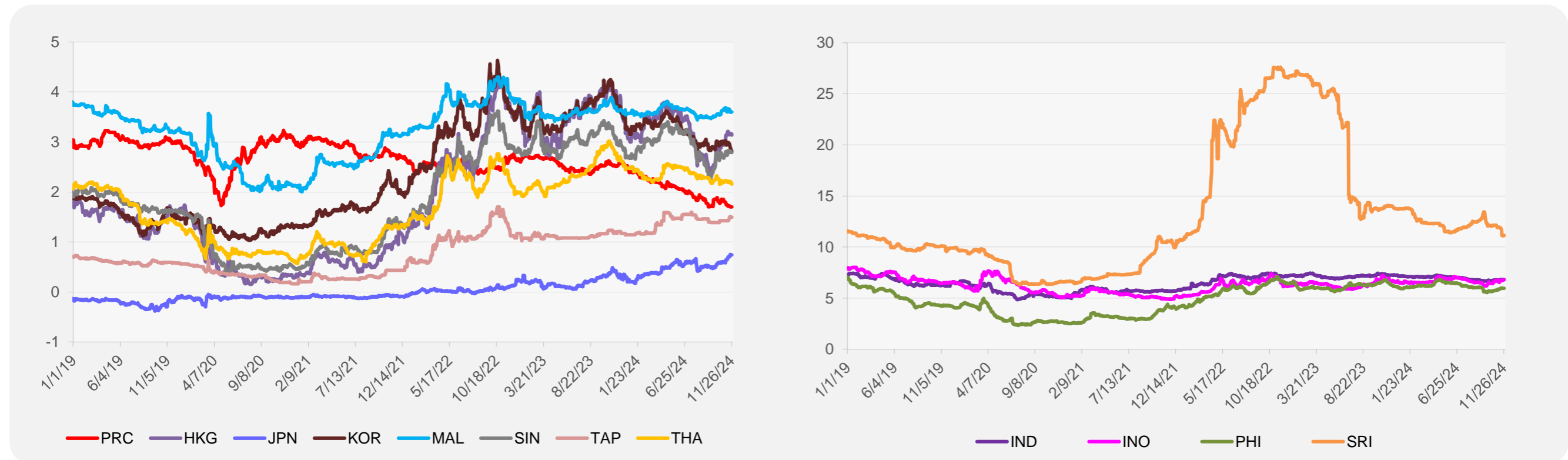
¹ Latest closing price from 20 November 2024.

² Singapore Exchange, Ribbed Smoked Sheet Rubber.

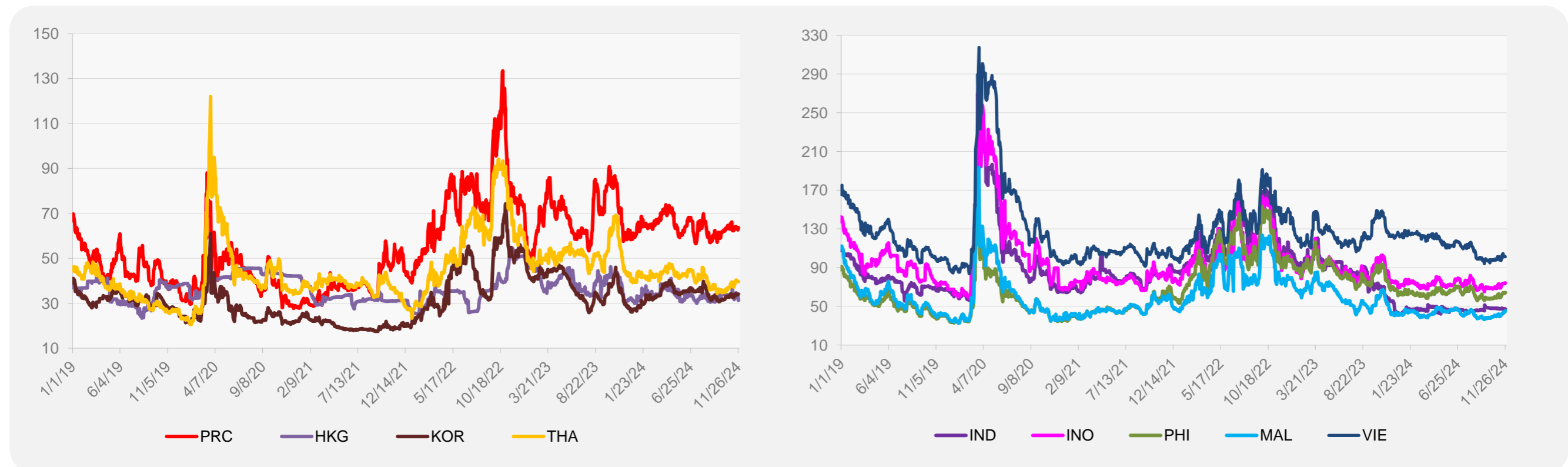


Source: ADB calculations using data from Bloomberg.

5-YEAR LOCAL CURRENCY GOVERNMENT BOND YIELDS (%)



5-YEAR CREDIT DEFAULT SWAP¹



¹ In USD and based on sovereign bonds.
Source: ADB calculations using data from Bloomberg.